

GovClarity™ Best Practice Article:

Zoning Maps: Improving Currency and Accuracy

Digital Map Products

Spatial Technology Made Easy

www.digmap.com

Digital Map Products

Spatial Technology Made Easy

GovClarity™ Best Practice Article: Zoning Maps: Improving Currency and Accuracy

Updating zoning classifications on specific properties and republishing zoning maps is a relatively common task for many local government agencies. As local government priorities evolve and expand, agency employees need an efficient method to regularly maintain spatial data and publish it for their communities, especially for such dynamic datasets as zoning, general plan and redevelopment areas. Further, as community residents become more engaged in the local development and zoning processes, it's increasingly important to have current and accurate zoning maps accessible online.

GovClarity™, a mapping integration platform, created specifically for cities and other local government organizations, makes it easy for agency staff to create, maintain and share data. Zoning Editor, a feature of GovClarity™, provides municipalities with a simple and efficient means to keep their zoning maps current and accurate. The following best practice article highlights how to take advantage of the spatial editing features in GovClarity™ to more easily and frequently update your zoning maps and publish them internally and externally.

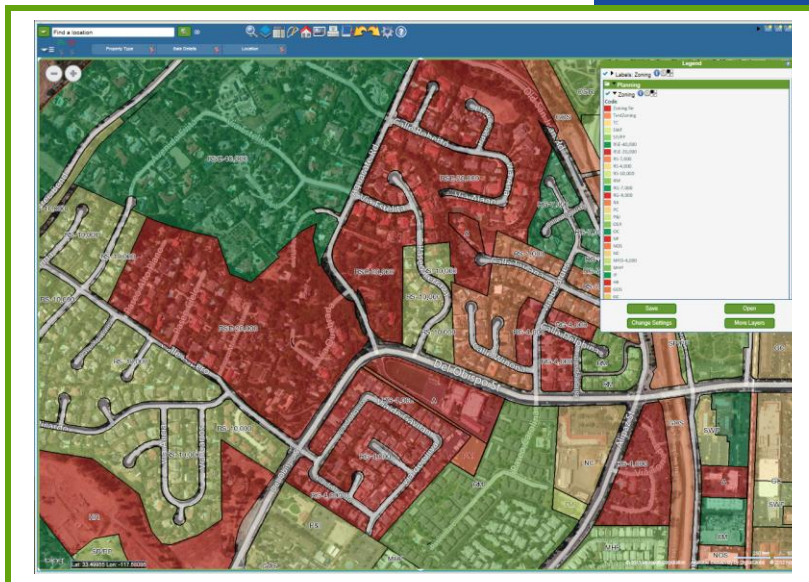
Best Practice: New Tools to Keep Zoning Maps Current and Accurate

During regular council meetings, zoning classifications are often updated as part of the permit approval process. Once approved by the voting council, these changes are effective immediately. For some municipalities without significant mapping resources, a dynamic dataset such as zoning becomes difficult to maintain and keep current amid frequent changes. Sometimes the only method for keeping track of these changes is to mark up a paper map and batch process changes on a semi-regular basis. Reconciling these paper maps with the digital base data introduces the opportunity for error and often complicates planning and zoning dependent operations.

Further, agency officials often make changes to individual or small groups of parcels rather than to entire zoning areas. In these situations, organizations need to have the ability to easily update the zoning on a particular parcel without having to edit and reload the entire layer. The Zoning Editor feature in GovClarity™ is designed to help local governments do just this.

Features of GovClarity™

- ✓ Search by APN, Address, Owner, Point of Interest, Community, and more
- ✓ Create and Edit Layers
- ✓ Built-in Data Layers
- ✓ Custom Search Filters
- ✓ Limit Search by Drawn Graphic
- ✓ Zoning Editor
- ✓ Share to CommunityView™
- ✓ Load and Publish Data
- ✓ User Permissions
- ✓ Spatial Links
- ✓ Easy-to-Use Customization
- ✓ And More...

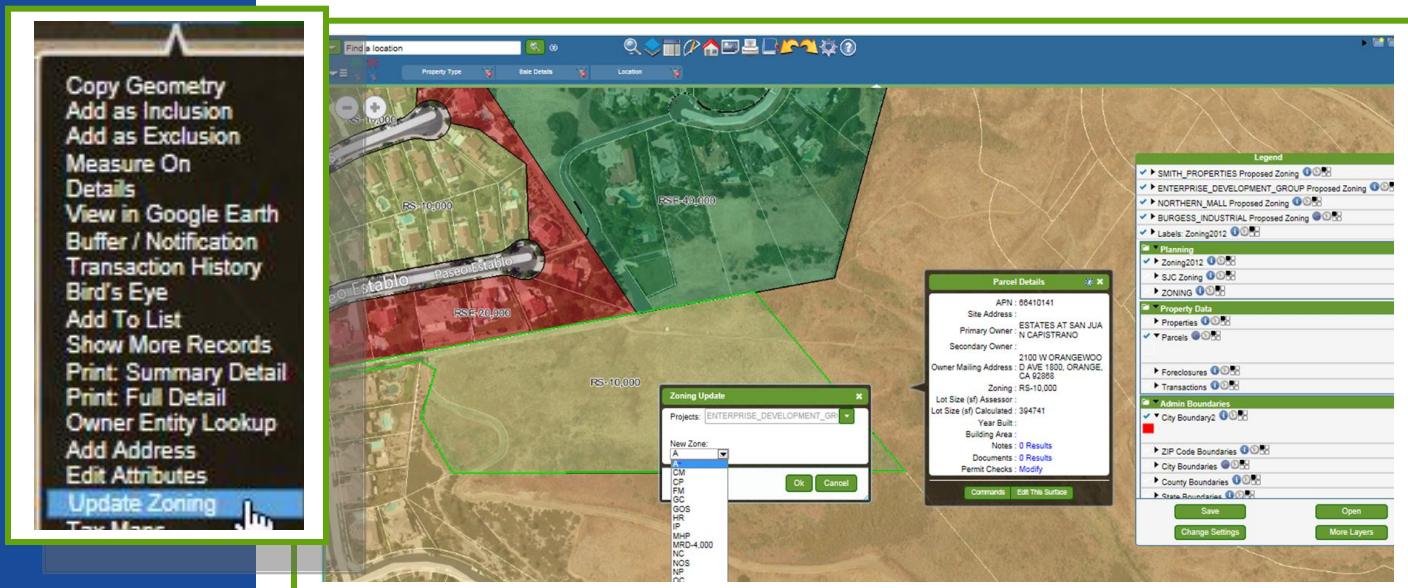


GovClarity™ provides cities a complete solution to access, maintain, and share its zoning maps within the city and with city residents.

Digital Map Products

Spatial Technology Made Easy

Zoning Editor is a permissions-based spatial editing feature in GovClarity™ that allows authorized employees to update zoning information for individual or groups of parcels in a few steps and without knowledge of complex mapping systems. Quickly update zoning for parcels, publish changes to your digital zoning layer, share the updated zoning map with other departments, and publish the latest maps to residents via CommunityView™. No longer does local government need to wait for regularly scheduled batch updates and compromise the accuracy and currency of zoning maps.



A zoomed in view of options available for a selected parcel, including Update Zoning.

The Zoning Editor feature lets cities manage updates to their zoning maps with a few simple clicks.

With Zoning Editor, authorized agency staff can maintain their zoning dataset in real time. To get started using Zoning Editor, you need a digital version of your zoning map in GovClarity™. This digital zoning layer in GovClarity™ becomes your organization's master zoning dataset and all subsequent changes to the zoning map are made to this copy.

Using Zoning Editor, all parcels proposed for re-zoning are added to a new or existing project. A project is specific to a municipal initiative for re-zoning. It may contain one parcel or multiple parcels proposed for re-zoning. When a change in zoning is proposed, the authorized staff member simply searches for the parcel or parcels requiring modification in GovClarity™. From the Parcel Details window, the employee selects "Update Zoning" from the Commands menu. In the window that appears, the employee selects a new zoning classification for the subject property and adds the property to a project.

Multiple projects can be created without having to update the zoning layer (the master zoning dataset). The proposed zoning changes in projects are not part of the zoning layer. When the city council issues final approval for a project, an authorized staff can publish the project. Then the zoning updates in the project immediately become part of the zoning layer. The zoning map is updated and available to all GovClarity™ users.

Digital Map Products

Spatial Technology Made Easy

CommunityView™

Powering Smart Communities



With CommunityView™ and Zoning Editor in GovClarity™, cities can publish their updated zoning maps to residents for self-service.

Agencies can even share the information with the public by pushing the latest changes to CommunityView™. If desired, a label layer can be created to conveniently display each zone's code on the map.

By updating zoning maps in near real-time, cities benefit from having one authoritative and current zoning dataset widely available for city employees. Plus, because updates are done in a single-step as opposed to multi-step batch processing, data errors are reduced and therefore data quality heightened. The community also benefits from easy publishing of updated maps from GovClarity™ to CommunityView™. Residents have a growing interest in their community's zoning and posting current and accurate maps online encourages their participation.

Summary

Easy-to-use mapping solutions such as those available through GovClarity™ make it significantly easier for municipalities of all sizes to create, maintain, share, and publish spatial data. The ability to make on-the-fly changes to zoning classifications with Zoning Editor enables local governments to maintain accurate datasets that reflect current conditions. This dramatically reduces the time, staff and resources required to maintain your spatial data, allowing you to focus on more strategic objectives and deliver improved constituent service. Similarly, CommunityView™ provides a seamless platform to publish spatial data out to residents. This results in more current public-facing data, greater resident self-service, and deeper community engagement with the municipal and local initiatives. GovClarity™ leverages location to integrate your existing data and systems, and to empower your agency staff to do their jobs as effectively as possible.

* * * * *

Digital Map Products' Best Practice Series

"GovClarity™ Best Practice Article: Zoning Maps – Improving Currency and Accuracy" is part of Digital Map Products' Best Practices Series, a collection of articles intended to share industry insights, increase product knowledge and help readers benefit from advances in spatial technology.

About GovClarity™ and Digital Map Products

GovClarity™ is a Software-as-a-Service mapping integration platform created specifically for cities and other local government organizations that serves as the logical integration and access point for all of an agency's data. GovClarity™ is the complete solution to rapidly and cost-effectively spatially-enable your city and unify your data sets for more effective consistent service. Digital Map Products is a leading innovator of cloud-based spatial solutions that bring the power of spatial technology to business, government, and consumers. The company's mission is Spatial Technology Made Easy.

www.digmap.com/products/citygis.htm